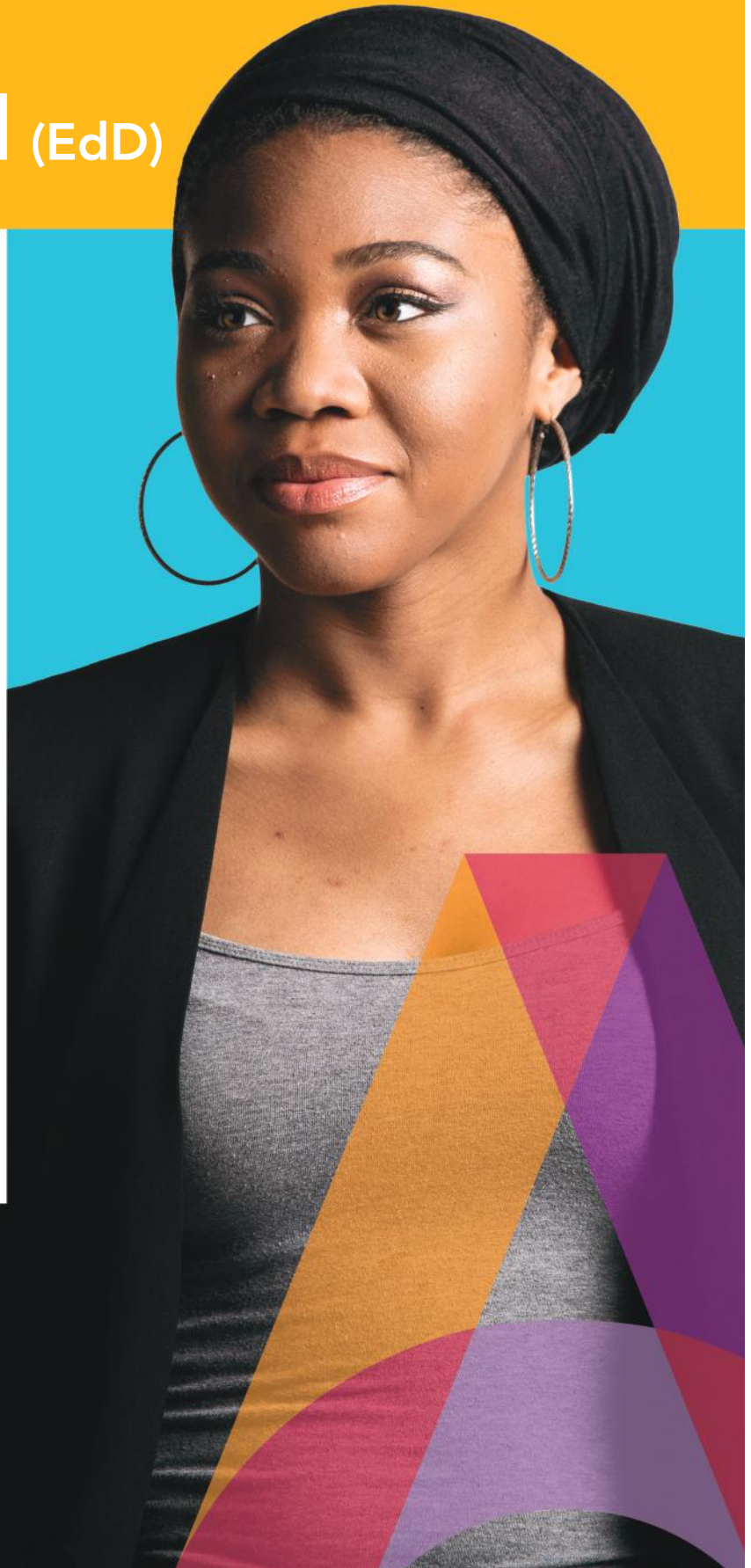


# ALVERNO COLLEGE

## DOCTOR OF EDUCATION (EdD)

Leadership in  
education starts  
with **YOU.**

Become the leader in education that you're meant to be. Alverno College's online EdD offers the rigorous course content and personal support you need to strengthen your unique voice as a leader and advocate for today's education system.



# ALVERNO COLLEGE DOCTOR OF EDUCATION

Our EdD program  
is designed with  
**YOU** in mind:

## DISSERTATION SUPPORT

With dissertation support from day one, you'll be empowered to reach your goals.

## ONLINE PROGRAM

All coursework is online with only two weekend residencies over the duration of the program, giving you the flexibility you need.

## CONCENTRATIONS TAILORED TO YOU

Each of our concentration options lets you customize your coursework to fit with your experience, passion and career goals.

## DEGREE COMPLETION IN AS FEW AS TWO YEARS

Impact your career and the education field immediately with a systematic schedule to earn your degree.



[edd.alverno.edu](http://edd.alverno.edu) • (855) 577-5342



# ALVERNO COLLEGE

## DOCTOR OF EDUCATION

### Program Information

- 54-credit online EdD program for the flexibility to fit your life. (30 credits for ABD)
  - Two on-campus weekend residencies to connect with faculty and colleagues.
  - Three concentrations to choose from to fit your passion: **K–12 Leadership**, **Higher Education Leadership**, and **Teaching and Learning in Higher Education**.
  - Small class size of professionals in a cohort format
- allows you to form meaningful connections with classmates and faculty.
  - Learner-centered model emphasizes your growth and challenges you to be the education leader of tomorrow.
  - Superintendent track (only three additional credits) is available to prepare you for the superintendency; includes a tailored content course and superintendency practicum experience.

### Structure and Timing of Coursework

- Our online EdD is presented in an accelerated format to help you complete your EdD in as few as two years of study.
  - Each year of the online EdD program consists of three semesters: fall, spring and summer.
  - Dissertation seminar courses are highly personalized to your research interests and involve working with your advisor to develop and write your dissertation. Dissertation courses are 16 weeks in duration.
- Fall and spring semesters include eight-week courses that explore different aspects of educational studies, as well as a 16-week seminar focusing on the dissertation and research.
  - Summer terms include only eight-week courses from the doctoral core and your area of concentration.

### Program Outcomes

Alverno College's online EdD program consists of core curriculum, dissertation research and development, and your chosen concentration. This rigorous program equips you for the highest level of leadership in education by:

- Developing your understanding of trends and developments in global and national education policy and pedagogy.
- Building on your knowledge of the student population in your chosen concentration area.
  - Extending your research skills so you can evaluate academic literature and performance data from your institution for informed decision making.
  - Achieving the five key outcomes that educators should demonstrate: conceptualization, diagnosis, communication, coordination and inclusive interaction.



# ALVERNO COLLEGE DOCTOR OF EDUCATION



## Core Curriculum

### **EDD 801** – *Principles of Responsive and Transformational Leadership*

Explore the conceptual models, theories and frameworks that will empower you as an educator and leader. Analyze and define your professional practice by applying principles of responsive and transformational leadership.

### **EDD 803** – *Ethical Organizational Leadership*

Explore principles and frameworks of ethical organizational leadership. Examine how your professional values inform your responses to issues and challenges in educational contexts.

### **EDD 812** – *Equity in Diverse Educational Settings*

Propose strategies to address issues of disproportionality, inequity and bias based on an analysis of diversity and equity issues and how they impact education. Equipped with this knowledge, design meaningful interventions to address inequity or bias.

### **EDD 814** – *Scholarly Communication*

Refine your power as a writer and communicator through substantive feedback on your dissertation as it nears completion. Evaluate diverse methods for communicating your research findings by writing conference proposals, book proposals and peer-reviewed journal articles.

### **EDD 850** – *Transformational Leadership: Practice and Impact*

Assess your current practice within the context of responsive and transformational leadership, define yourself as a leader, and describe how your research has informed your leadership.



# ALVERNO COLLEGE DOCTOR OF EDUCATION

## Dissertation and Research

### **EDD 800** – *Dissertation Advisory I*

In this first dissertation course, you will identify a potential area for study, identify members of your dissertation committee, develop your initial research question and complete a draft literature review.



### **EDD 802** – *Research in Educational Contexts*

Define your areas of interest in relation to existing research by reading broadly and deeply from a variety of scholarly sources. Begin the framework for your literature review by developing a bibliography in APA format.

### **EDD 804** – *Research Methods*

Create an initial plan for a research method for your dissertation after analyzing and evaluating diverse research paradigms and methods. You can also explore the possibility of co-authoring your dissertation in this course.

### **EDD 810** – *Dissertation Advisory II*

Complete the introduction and literature review, and begin development of the methodology section of your dissertation.

### **EDD 811** – *Statistics and Data Analysis*

Deepen your understanding of statistical and quantitative data, and evaluate tools for effective analysis. Undertake a critical evaluation of the use of statistics to support arguments and claims. Identify appropriate tools and approaches for your own research design.

### **EDD 813** – *Advanced Research Methods and Data Analysis*

Take on deeper study of advanced research methods to identify methods aligned with your dissertation focus, and complete a draft of your research methodology for your proposal.

### **EDD 820** – *Dissertation Advisory III*

Complete and defend your research proposal. Compile, receive feedback on, revise and submit your Institutional Review Board (IRB) documents.

### **EDD 830** – *Dissertation Advisory IV*

Engage in data gathering and analysis, and begin write-up of your dissertation.

### **EDD 840** – *Dissertation Defense and Dissemination*

Defend your dissertation, receive feedback and make any needed revisions.

### **EDD 860** – *Dissertation V (optional)*

If necessary, you can opt for an additional semester to complete or revise and defend your dissertation.





# ALVERNO COLLEGE DOCTOR OF EDUCATION

## K–12 Leadership Concentration Courses

### **EDD 821** – *Leadership, Educational Law and Policy Leadership*

Deepen your knowledge of the authority, liability and legal responsibility of school personnel in public and private institutions, analyzing the impact of local, state and national constitutions, statutes and court decisions on education. Analyze policy development as a political process; develop an understanding of power structures and the role of leadership in impacting policy; and learn to work with influential groups and lobbies.

### **EDD 822** – *Governance, Management and Finance*

Study the organizational structure and administrative relationships in school settings through the lens of systems thinking and the study of administrative behavior. Explore organizational theory, the collection and distribution of tax revenue at all levels of government, problems and issues in funding education, and resource allocation.

### **EDD 823** – *Assessment, Technology and Data for School Improvement*

Explore the use of evaluative information for administrative decision making and the administration and evaluation of educational projects and programs. Develop your ability to assess needs and plan projects and programs, use technology for efficiency and effectiveness, and evaluate the impact of educational programs and decisions.

### **EDD 825** – *The Superintendency: Climate, Personnel and Supervision*

Explore the commitment and skills required for success as a school superintendent. Develop the competencies you need to create climates and capacities of learning across organizations through study of systematic leadership theory and best practices in instructional leadership.

### **EDD 826** – *Superintendency Practicum* *For Superintendency Track Only*

Practice administrative leadership in a setting beyond an individual school site as a part of a supervised practicum. Examine a range of challenges in school administration, develop and implement a practicum plan to meet the needs of the field experience, and provide evidence of learning through the completion of a final portfolio.



[edd.alverno.edu](http://edd.alverno.edu) • (855) 577-5342



# ALVERNO COLLEGE DOCTOR OF EDUCATION



## Higher Education Leadership Concentration Courses

### **EDD 831** – *Higher Education Legal Issues and Accreditation*

Compare regional accrediting body expectations, with an emphasis on regional IHE accrediting bodies. Apply what you learn about accreditation to write a proposal for a new degree program and prepare for a mock annual review.

### **EDD 832** – *Higher Education Curriculum and Assessment*

Demonstrate your ability to work effectively and collaboratively with key higher education stakeholders and faculty. Examine and evaluate curricula, explore strategies for board and trustee engagement, and identify methods for effectively addressing student and faculty concerns and grievances.

### **EDD 833** – *Assessment, Technology and Data in Higher Education Settings*

Analyze the tools and data used in program evaluation, including retention, graduation and attrition rates, evaluations of faculty, and enrollment trends and patterns. Apply this analysis to the design of a higher education program evaluation process.

### **EDD 835** – *Higher Education Roles, Responsibilities and Leadership*

Explore the commitment and skills required for success as an IHE leader. Study systematic leadership theory and practice, developing professional competencies and skills that will enable you to create climates and capacities for learning across organizations.





# ALVERNO COLLEGE DOCTOR OF EDUCATION



## Teaching and Learning in Higher Education Concentration Courses

### **EDD 832** – *Higher Education Curriculum and Assessment*

Demonstrate your ability to work effectively and collaboratively with key higher education stakeholders and faculty. Examine and evaluate curricula, explore strategies for board and trustee engagement, and identify methods for effectively addressing student and faculty concerns and grievances.

### **EDD 833** – *Assessment, Technology and Data in Higher Education Settings*

Analyze the tools and data used in program evaluation, including retention, graduation and

attrition rates, evaluations of faculty, and enrollment trends and patterns. Apply this analysis to the design of a higher education program evaluation process.

### **EDD 838** – *Instructional Design: Fundamentals*

Develop deep understandings of theories and practices of instructional design and assessment-as-learning related to their disciplinary/content contexts in higher education institutions.

### **EDD 839** – *Instruction for Different Populations*

Engage in intensive study of lived experiences, cultural knowledge and prior learning of the students in their higher education contexts. Incorporate these understandings into engaging, inspiring, and authentic learning experiences in their content area(s) and related to higher education academic programs.





# ALVERNO COLLEGE

## DOCTOR OF EDUCATION

### All But Dissertation (ABD) with a Concentration in Teaching and Learning in Higher Education Courses

The ABD program provides a practical path for students who have achieved All But Dissertation status to complete a doctor of education with a concentration in Teaching and Learning in Higher Education. The goal of the program is to help individuals complete their doctoral work and enter the college or university classroom highly skilled in theories and practices of effective teaching, learning, and assessing in higher education contexts.

#### **EDD 800 – Dissertation Advisory I**

In this first dissertation course, you will identify a potential area for study, identify members of your dissertation committee, develop your initial research question and complete a draft literature review.

#### **EDD 801 – Principles of Responsive and Transformational Leadership**

Explore the conceptual models, theories and frameworks that will empower you as an educator and leader. Analyze and define your professional practice by applying principles of responsive and transformational leadership.

#### **EDD 802 – Research in Educational Contexts**

Define your areas of interest in relation to existing research by reading broadly and deeply from a variety of scholarly sources. Begin the framework for your literature review by developing a bibliography in APA format.

#### **EDD 810 – Dissertation Advisory II**

Complete the introduction and literature review, and begin development of the methodology section of your dissertation.

#### **EDD 820 – Dissertation Advisory III**

Complete and defend your research proposal. Compile, receive feedback on, revise and submit your Institutional Review Board (IRB) documents.

#### **EDD 830 – Dissertation Advisory IV**

Engage in data gathering and analysis and begin write-up of your dissertation.

#### **EDD 840 – Dissertation Defense and Dissemination**

Defend your dissertation, receive feedback and make any needed revisions.

#### **EDD 832 – Higher Education Curriculum and Assessment**

Demonstrate your ability to work effectively and collaboratively with key higher education stakeholders and faculty. Examine and evaluate curricula, explore strategies for board and trustee engagement, and identify methods for effectively addressing student and faculty concerns and grievances.

#### **EDD 838 – Instructional Design: Fundamentals**

Develop deep understandings of theories and practices of instructional design and assessment-as-learning related to their disciplinary/content contexts in higher education institutions.

#### **EDD 839 – Instruction for Different Populations**

Engage in intensive study of lived experiences, cultural knowledge and prior learning of the students in their higher education contexts. Incorporate these understandings into engaging, inspiring, and authentic learning experiences in their content area(s) and related to higher education academic programs.



# ALVERNO COLLEGE DOCTOR OF EDUCATION



## EdS to EdD

If you've earned your EdS, Alverno's EdS to EdD bridge program allows you to apply 15 credits from your EdS towards your Doctor of Education. As an EdD student, your EdS courses count as elective credits towards your EdD and take the place of your concentration.



[edd.alverno.edu](http://edd.alverno.edu) • (855) 577-5342



# ALVERNO COLLEGE DOCTOR OF EDUCATION



## Admissions Requirements

Candidates seeking admission will be required to submit evidence of the following:

- A master's degree in a field related to the student's preferred area of concentration with a cumulative GPA of 3.0 or above, which was earned from a regionally accredited institution.
- Official graduate and undergraduate transcripts.
- A resume showing professional experience. A minimum of three years' relevant experience is recommended.
- Two letters of reference from individuals in leadership roles in the applicant's chosen area of concentration attesting that the applicant has the ability to engage in studies at the doctoral level and to conduct research.
- A personal interview with a member of the graduate faculty representing the applicant's preferred area of concentration may be requested. An electronic medium may be used in place of the interview for applicants for whom distance is a factor.
- A written statement of professional goals and topic of research interest.
- A 750–1500-word sample of the applicant's writing abilities.
- Evidence that non-U.S. applicants have received a minimum score of 550 (written), 213 (computer) or 79 (Internet) on the TOEFL examination.



**INNOVATION IN EDUCATION  
STARTS HERE.**

Visit [edd.alverno.edu](http://edd.alverno.edu) or call (855) 577-5342